



WMF combiNation F

discover a new world of taste

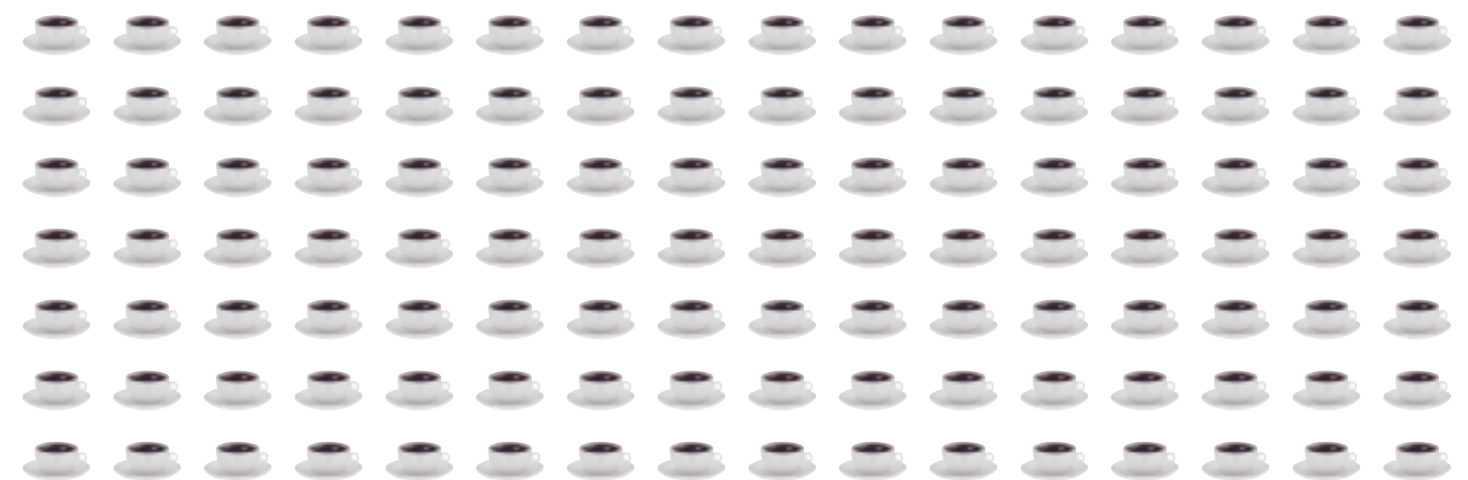
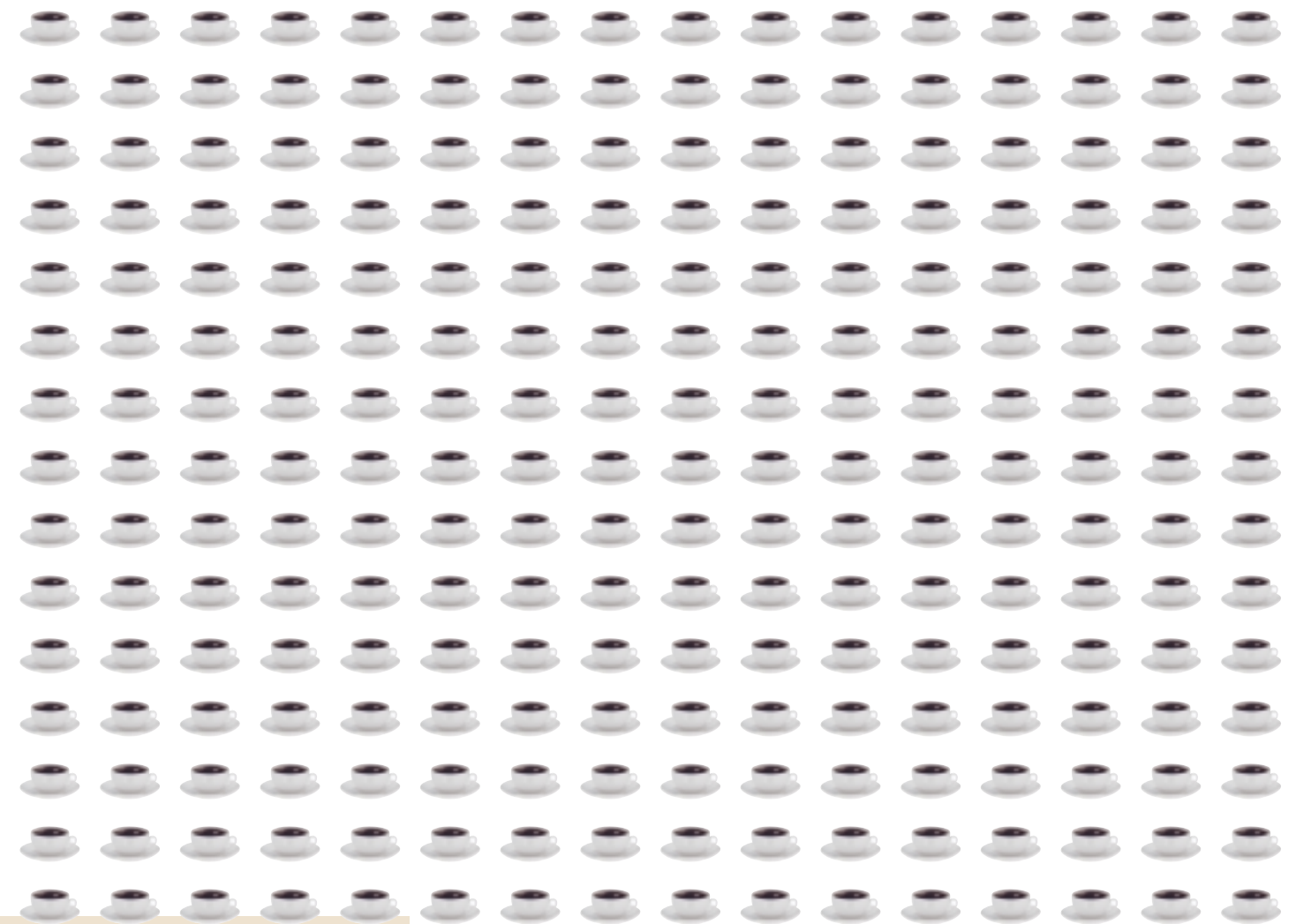


A good idea

The new WMF combiNation **F** creates a completely new dimension in aromatic filter coffee from one of the most fashionable all-automatic coffee machines on the market. The timeless, aesthetically perfect design also promotes hitherto inconceivable user-friendliness. The concave form of the front panel ensures an optimum overview and concentrates the user's attention on the large, easy-to-operate product keys and the touchscreen display. The operating status and the set brewing quantity can be read off here and changed at any time. Surely the simplest way of discovering a whole new world of taste. If you also wish to prepare top-quality coffee specialities in addition to filter coffee, simply combine the WMF combiNation **F** with the WMF combiNation **S**.



A really good cup of coffee has always been something special. What is even more special, however, is to produce that outstanding cup of coffee time and time again, and at high speed. Precisely that is the speciality of the WMF combiNation **F**. **Decades of experience with brewing and storage systems for filter coffee have been united with state-of-the-art digital technology to create a reliable and enjoyable taste in coffee.** Different brewing quantities and the optional height adjustment of the front panel make it possible to fill virtually any cup or pot in quantities individually programmed for your particular cup and pot sizes.



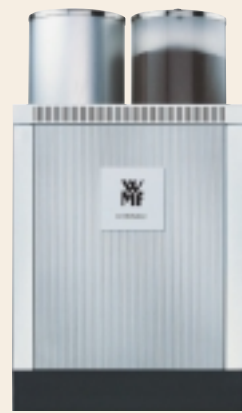
The design of the WMF combiNation **F** follows the same clear form as the WMF combiNation **S**, setting visual highlights without any superfluous accessories.

The WMF combiNation F stands out through its almost classical aestheticism, which harmonizes with a whole variety of surroundings. It is used wherever filter coffee is consumed in large quantities, e.g. when serving breakfast in cafés or self-service areas. Wherever it is used, it demonstrates its claim to quality, style and functionality. A coin checker or changer, token checker and card reader are also available for use in self-service areas.





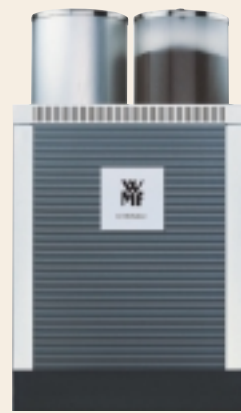
One coffee machine for millions of different places? Is it possible to provide a suitable machine for every single one? It is. **The sides and rear panel of the WMF combiNation F are replaceable and come in three standard design versions.** In addition to these standard versions, our Basic version also makes it possible to design the sides individually. Ask your interior designer or architect, or simply design your own WMF combiNation **F**, and see how it blends perfectly with its surroundings or becomes an additional eyecatcher.



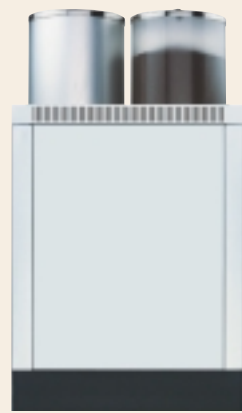
Aluminium look



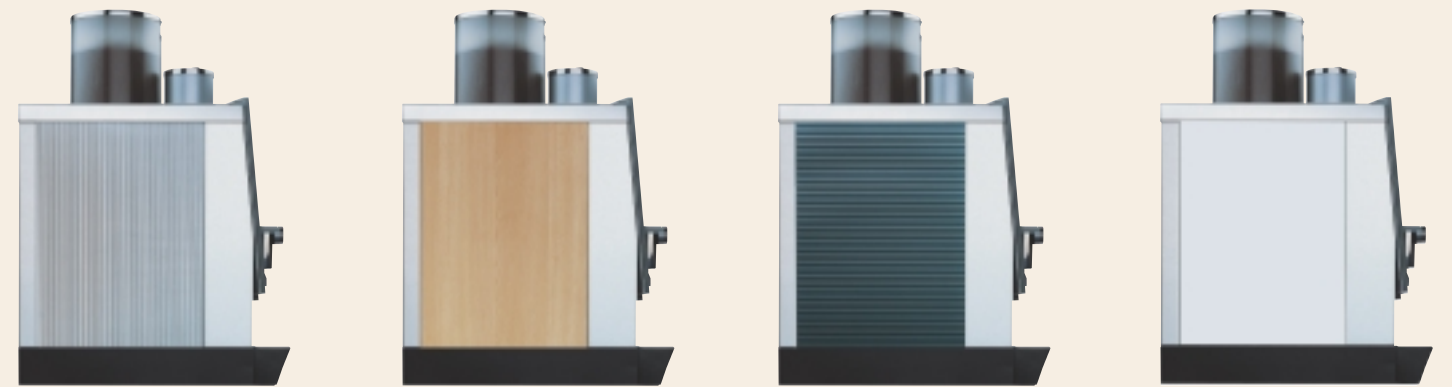
Beechwood look



Anthracite look



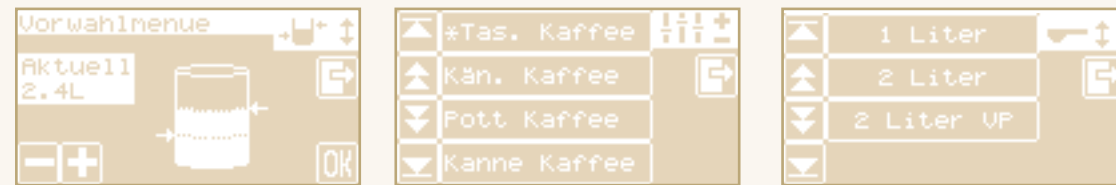
Basic





Quality assurance and quality management were factors of prime importance when developing the WMF combiNation **F**. That is also demonstrated by the fact that the entire WMF Coffee Machines area has been awarded the coveted **ISO 9001 certificate**. Maintaining such high quality is also a matter of good service. With more than 200 own service technicians operating throughout the country and many others employed by our subsidiaries, we have the **largest service organization for commercial coffee machines in Europe**.

Preselection of the brewing quantity allows the machine to be operated economically or for maximum performance.



All keys on the WMF combiNation **F** can be individually assigned to products and prices and labelled professionally.



The newly developed cleaning system for the WMF combiNation **F** operates all-automatically if desired. The granulated cleaning agent is automatically metered via a separate hopper. All you have to do is press the button or start the timer.





TECHNICAL DATA	WMF combiNation F		Cup Rack
Rated power *	9,3 kW	13,8 kW	210 W
Hourly output **	430 cups	500 cups	
Filter coffee			
Storage hopper	4.0 litres	4,0 litres	
Hot water output, total	72 l/h	108 l/h	
Ground coffee hopper capacity	2,2 kg	2,2 kg	
Power supply *	3/N/PE 50 Hz/400V	3/N/PE 50 Hz/400V	1/N/PE 230 V / 50 Hz
Cup capacity			90 - 140
External dimensions:			
Width	450 mm	450 mm	350 mm
Height with ground coffee hopper	810 mm	810 mm	600 mm
Depth	590 mm	590 mm	498 mm
Net weight	Approx. 68 kg	Approx. 68 kg	Approx. 25 kg
Continuous sound pressure level (Lpa) ***	< 70 dB (A)	< 70 dB (A)	
Heat output			
Operational	200 W	200 W	
Full-Load *	9150 W	13650 W	
Coffee grouts disposal ****	Wet ejection	Wet ejection	

Subject to change without notice

* Customized versions see rating plate; specified values apply to basic version.

** The specified hourly output is a GUIDELINE value and depends on the following factors, among others: ground coffee quantity, type of coffee, brewing temperature, brewing orifice diameter, brewing pressure, hardness of the water and general operating condition of the machine, (e.g. scale deposits, connections, power, fresh water, drain, wear, etc.).

*** The A-weighted sound pressure level Lpa (slow) and Lpa (impulse) at the workplace of the operating personnel is below 70 dB(A) in all operating modes.

**** We recommend the use of a WMF grouts separator.

WMF combiNation F

discover a new world of taste

WMF Aktiengesellschaft Hotel/Coffee Machines Export Department
 D-73309-Geislingen/Steige
 Phone: (0 73 31) 25 84 34 · Fax: (0 73 31) 25 87 92
 e-mail: gastro-export@wmf.de · <http://www.wmf.com>
 OVA 2440 # 63 8894 0391 Printed in Germany 11.01

